

NC STATE
UNIVERSITY

N.C. Plant Sciences Initiative



Get to Know PSI!

Creating Our PSI Culture

A word cloud of values and concepts for PSI culture. The words are arranged in a roughly circular pattern, with varying sizes and colors. The largest word is 'Community' in orange. Other prominent words include 'Collaborative' in dark red, 'Innovative' in blue, and 'Communication' in yellow. Smaller words include 'Interdisciplinary', 'Connect', 'Fun', 'Inclusive', 'Welcoming', 'Teamwork', 'Pioneering', 'Diverse', 'Outreach', 'Partnerships', 'Education', 'Neighborhoodly', and 'Entrepreneurial'.

Interdisciplinary
Connect
Innovative
Fun
Communication
Inclusive
Welcoming
Teamwork
Neighborhoodly
Entrepreneurial
Collaborative
Pioneering
Education
Diverse
Community
Partnerships
Outreach

N.C. PSI's Five Platform Directors



Ross Sozzani

**PLANT
IMPROVEMENT**

Professor of
Synthetic and
Systems Biology

Department of
Plant and Microbial
Biology



Chris Reberg-Horton

**RESILIENT
AGRICULTURE
SYSTEMS**

Professor of
Cropping Systems

Department of
Crop and Soil
Sciences



Cranos Williams

**DATA-DRIVEN
PLANT SCIENCES**

Goodnight
Distinguished
Professor of Ag
Analytics

Dept. of Electrical
& Computer
Engineering

Dept. of Plant &
Microbial Biology



Terri Long

**EDUCATION &
WORKFORCE
DEVELOPMENT**

Associate
Professor

Department of
Plant and Microbial
Biology



Rachel Vann

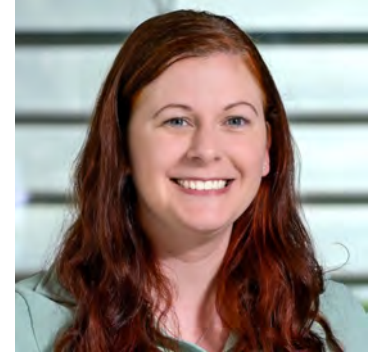
**EXTENSION
OUTREACH &
ENGAGEMENT**

Assistant Professor
and Soybean
Extension
Specialist

Department of
Crop and Soil
Sciences

The PSI Team

<https://cals.ncsu.edu/psi/group/staff/>

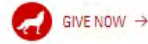


PSI Intranet Page – Bookmark it!

https://go.ncsu.edu/psi_info

UNIVERSITY

CALS Employee Portal



[CALs Community News](#) [Employee Resources](#) [Units](#) [Departments](#) [Business Operations](#) [Communications](#) [Human Resources](#) [Search](#)



N.C. Plant Sciences Initiative

- Staff Directory
- Shared Equipment Info
- Communications Resources
- Funding Opportunities
- And more!

Welcome to the NC State Plant Sciences Building (PSB) intranet. These pages are intended to serve as a resource for PSB occupants on how to effectively use the building and where to go for help with operational issues.

[PSI Staff Directory](#) →

[Using Shared Equipment](#) →

[Physical Address for Building](#) →

[Building Tours](#) →

[Parking](#) →

["Who do I contact..." Reference Chart](#) →

Important Phone Numbers

- For all emergencies - dial 9-1-1
- NC State University Police - 919-515-3000 (non-emergency)
- If you know someone facing a mental health challenge, please dial 988.
- For a facilities-related issue:
 - Business hours: Geoff Bock, Director of Operations - 919-513-2635 - grbock@ncsu.edu
 - If a facilities-related emergency and/or after hours or weekends: Call 919-515-2991

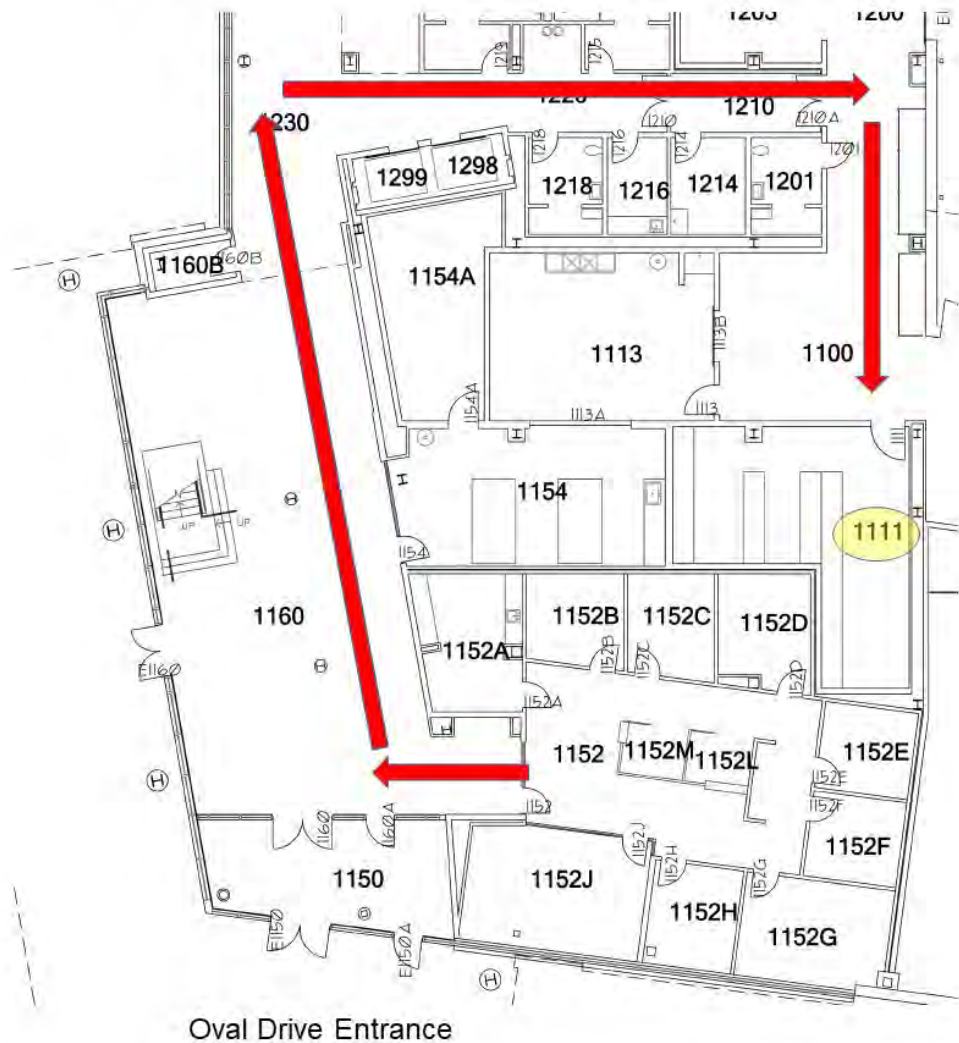
PSI Operational Highlights

- Listservs – ncpsi-internal@ncsu.edu
- Subgroups for lab users, grad students, etc.
- Mail and Packages
- Room 1111
- Building access
- Open hours are 7:30a-5:30p, Mon-Fri
- Badge access
- If locked out, use emergency panels near elevators
- Events - <https://cals.ncsu.edu/psi/event-space/>
- For reserving seminar rooms, 3152, 3158, 4152 Boardroom
- Reserve meeting rooms in Google Calendar
- A/V or IT Help - ncpsi-it-help@ncsu.edu



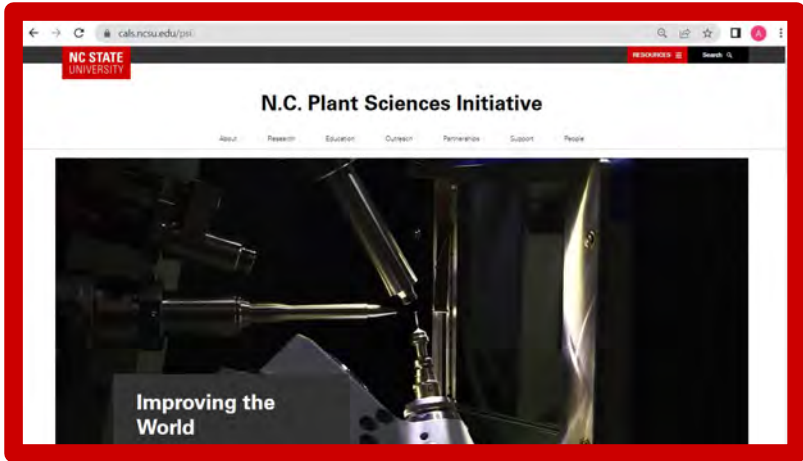
When in doubt, you can always visit us in the PSI Administration Suite (Room 1152) for assistance!

Map to Room 1111 for Package and Mail Retrieval



- PSI staff receive all packages and mail delivered to PSB
- End recipients will be notified they have a package via email
- Packages and mail should be picked up from Room 1111 at their earliest convenience.

An Open Invitation to Connect with N.C. PSI



N.C. PSI Website
cals.ncsu.edu/psi



Social Media



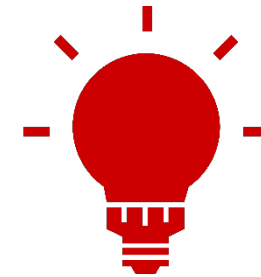
Social Events



Seminars,
Programs,
Partnership
Focused Events



N.C. PSI Newsletter



Opportunities for Entrepreneurism
(Coming Soon!)

Incubator space
Advisor and mentorship group

NC STATE
UNIVERSITY

N.C. Plant Sciences Initiative

Questions?

